

Acer Projector Gateway

Introduction

The Acer Projector Gateway (APG) is a smart, integrated system that enhances presentations via your Acer projector. The APG provides versatile source connectivity, the latest EZCastPro Management tools for networking display, supports for media contents playback via the built-in decoder and more.

Networking APG features

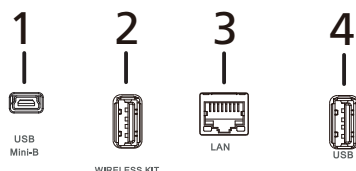
- With high-performance wireless projection via an acer USB WiFi adapter or an RJ-45 port for wired connections (only for the models with RJ-45 port).
- The projector can act as an access point (AP) or work in WiFi con-current mode when doing networking display.
- Users can easily launch the EZCastPro Management to do Full screen, L/R, 4-split screen projection and enable high quality video streaming.
- Powerful wireless display features ready for devices with different OS (MS Windows, Mac OS, Android, iOS)
- Supports wireless network security (WPA-PSK, WPA2-PSK).
- Acer Projector Gateway Web Management enables a web-based control of Acer projector for Windows NB/PC (only when the projector is in AP mode).
- Supports firmware upgrade via USB flash drive.


Multi-media features

- Fancy and stylish user interface for better experience.
- You can enjoy media & documents playback via USB flash drive.
- Supports high resolution JPEG and BMP picture formats, slideshow and various slideshow effects for the best viewing experience.
- Supports MP3, PCM and WMA...audio formats, music spectrum and random play function for your pleasing.
- Supports office documents playback (Word, Excel, PowerPoint, PDF).
- Easy control for all media functions by the remote control.
- You can mirror or extend your screen via the source USB Connection.

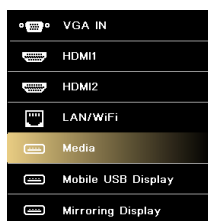
Get Started

Connecting multi-media device to the projector



#	Component	Description
1	Mini USB	Projects NB/PC screen via mini USB (USB B or USB Connection).
2	WirelessProjection-Kit (optional)	For Acer WirelessProjection-Kit (optional) only. Before the projector is turned on, you need to insert the wireless projection-kit (optional). <div>  <p>NOTE: Acer WirelessProjection-Kit (optional) is only allowed to be installed while projector is off; forbidden to plug out or installed while projector is active.</p> </div>
3	LAN port	Connects to an Ethernet 10/100-based network.
4	USB Type A	Connects to USB flash drive for multimedia playback.

To switch between different inputs, press SOURCE on the projector or remote control to open the Source menu that allows you to select an input signal source.



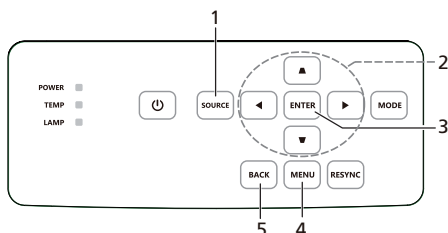
Copyright © 2018. Acer Incorporated.
All Rights Reserved.

Changes may be made periodically to the information in this publication without obligation to notify any person of such revisions or changes. Such changes will be incorporated in new editions of this manual or supplementary documents and publications.

This company makes no representations or warranties, either expressed or implied, with respect to the contents hereof and specifically disclaims the implied warranties of merchantability or fitness for a particular purpose.


Control Panel and Remote Control

Control Panel



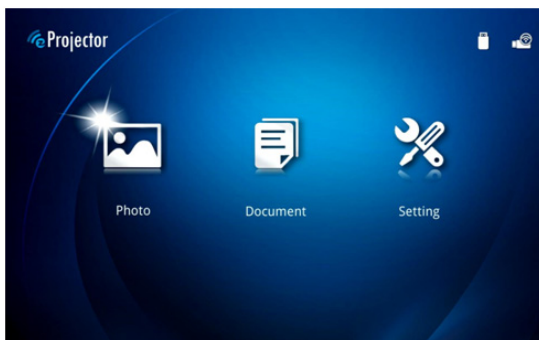
#	Function	Description
1	SOURCE	Press to open the Source menu that allows you to select an input signal source.
2	Four directional selection keys	Selects the media files or features in four directions.
3	ENTER	Confirms your selection of items.
4	MENU	Launches the projector Onscreen Display (OSD) menu.
5	BACK	Cancels your selection, or goes back to previous page.

Remote Control

#	Function	Description
1	ENTER	Confirms your selection of items.
2	BACK	Cancels your selection, or goes back to previous page.
3	MEDIA	Goes to MEDIA HOME page.
4	 Four directional select pad	Selects the media files or features in four directions.
5	SOURCE	Press to open the Source menu that allows you to select an input signal source.
6	MENU	Launches the projector Onscreen Display (OSD) menu.

Media Mode

Enter Media mode by selecting the source “Media” and you will see Media home page as below. This mode allows you to browse data files stored in USB flash drive after connecting to the projector.



Photo

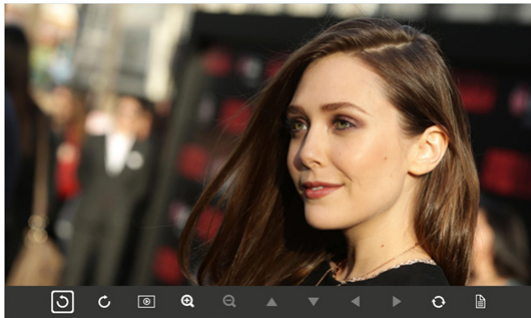
When viewing photos, you can press ▲/▼/◀/▶ to select file and press ENTER to access.




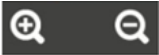
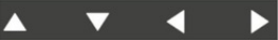

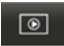

Note 1: Supports BMP and JPEG photo format only.

Note 2: Not-supported photo would show forbidden icon when preview.

When playing photos, you can press ◀/▶ to select a feature and press "ENTER" to execute it. For details, see "Feature Function".



Feature Function (Photo)

Icon	Function Description
	Rotate photo by 90 degrees
	Zoom in / Zoom out
	<ol style="list-style-type: none"> 1 Pan move when zoom in. 2 Execute previous / next page when tool bar disappears (Not supported when zoom in)
	Resume photo size to default by 1x
	Slide show
	Photo information
PgUp / PgDn (on remote controller)	Execute previous / next page after tool bar disappears

Supported photo formats

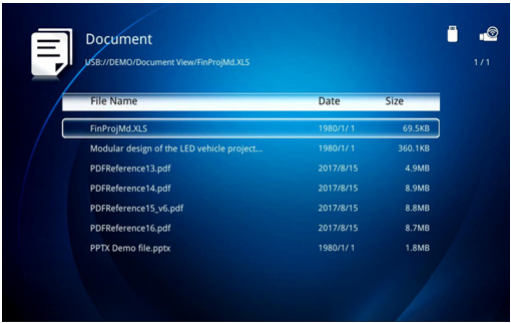
Image Type	Sub type	Color Space	Max pixels
JPEG	Baseline	YUV400	8000 x 6000
		YUV420	
		YUV422	
		YUV440	
		YUV444	
	Progressive	YUV400	1600 x 1200
		YUV420	
		YUV422	
		YUV440	
		YUV444	
BMP			1600 x 1200



NOTE: BMP resolution supports up to 1600x1200; JPEG progressive resolution support up to 1600x1200.

Document

When browsing document files, you can press ▲/▼/◀/▶ to select file and press ENTER to access. Remote controller or keypad button behavior is different when browsing different types of documents.



1

Acer Projector Gateway

Introduction

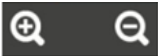
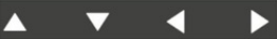


The Acer Projector Gateway (APG) is a smart, integrated system that enhances presentations via your Acer projector. The APG provides versatile source connectivity, the latest eDisplayPro Management tools for networking display, supports for media contents playback via the built-in decoder and more.

Networking APG features

- With high-performance wireless projection via an acer USB WiFi adapter or an RJ-45 port for wired connections (only for the models with RJ-45 port).
- The projector can act as an access point (AP) or work in WiFi co-current mode when doing networking display.
- Users can easily launch the Acer eDisplayPro Management to do Full screen, LR, 4-split screen projection and enable high quality video streaming.
- Powerful wireless display features ready for devices with different OS (MS Windows, Mac OS, Android, iOS)



Feature Function (Document)

Icon	Function Description
	Zoom in / Zoom out (The default magnification is by system at first)
	<ol style="list-style-type: none"> 1 Pan move when zoom in. 2 Execute previous / next page when tool bar disappears (Not supported when zoom in)
	Fit to height / Fit to width
	Present page / Total pages
PgUp / PgDn (on remote controller)	<ol style="list-style-type: none"> 1 Execute previous / next page after tool bar disappears (For ppt, word, pdf) 2 Switch worksheet (For excel)

Supported Document Formats

File Format	Support Version	Pages/Lines Limitation	Size Limitation
Adobe PDF	PDF 1.0	Up to 1000 pages (One File)	Up to 75MB
	PDF 1.1		
	PDF 1.2		
	PDF 1.3		
	PDF 1.4		
Microsoft Word	Word 97, 2000, 2002, 2003.	-	Up to 100MB
	Word 2007(.docx), 2010(.docx)		
Microsoft Excel	Excel 97, 2000, 2002, 2003.	Column Limit: up to 256	Up to 15MB
	Excel 2007(.xlsx), 2010(.xlsx).	Sheet: up to 100	
Microsoft PowerPoint	British PowerPoint 97.	Up to 1000 pages (One File)	Up to 19MB
	PowerPoint 2000, 2002, 2003.		
	PowerPoint 2007(.pptx).		
	PowerPoint 2010(.pptx).		
	PowerPoint presentation-2007 and 2010(.ppsx)		



NOTE 1: Decoding may take a while for large files with complex contents.

Note 2: Objects embedded in files cannot be activated or viewed.

Note 3: For Microsoft Word

(1) No support for advanced settings, such as drawing plug-in or table background settings.

(2) Contents outside the defined borders in Microsoft Word will not be displayed.

(3) Not support Bold Text in Simple Chinese front

Note 4: For Microsoft PowerPoint

(1) Slide effects not supported.

(2) Password-protected sheets are not protected.

Note 5: For Microsoft Excel

(1) Worksheets are displayed individually and sequentially when the workbook has multiple worksheets.

(2) Page layout and numbering may be changed during decoding.

Setting

Menu Item	Options
Photo Display Ratio	Original, Full Screen
Slideshow Duration	3 sec, 5 sec, 10 sec

Software Upgrade Instructions

There are 2 ways to do this:

■ Via USB flash drive

- (1) Download new firmware by one compressed file from acer global website.
- (2) Copy the uncompressed file in USB flash drive and plug in projector.
<Note: file name is by Model Name_USB_6 digits.bin (Ex: X1525C_USB_000000.bin)
- (3) Press "MENU" to open the OSD menu.
- (4) Go to "Setting" > "Firmware Upgrade" Select "USB Drive" and press Enter to start.

■ Via Network

- (1) Connect a Acer WirelessPrejection-Kit dongle (optional) or a RJ45 cable to the projector.
(Make sure it connects to the internet.)
- (2) Press "MENU" to open the OSD menu.
- (3) Go to "Setting" > "Firmware Upgrade" Select "Network" and press Enter to start.



.....

NOTE 1: Do not turn off projector while the firmware upgrade is processing.

NOTE 2: When upgrading the firmware, remove all cables and other USB devices.

NOTE 3: External USB HDD is probably not supported if connection lacks of USB power (recommend to use Y-cable) since USB power is not enough.

NOTE 4: The disk with partition is not supported.

EZCastPro Management

Installed Acer WirelessProjection-Kit dongle inside the projector first (other USB WiFi dongle isn't supported). Adjust projector source to LAN/WiFi and display over network (either LAN or WiFi).

Installation and Connecting Instruction



- **Step 1. Make sure your projector connects with network and select the source "LAN/WiFi".**
 - Install Acer WirelessProjection-Kit dongle (optional) to the projector or connect a LAN cable to the projector. Power on the projector and switch to the source "LAN/WiFi".
- **Step 2. Download and install the software/app on your device.**
 - For mobile devices, EZCastPro app is available on Google Play (Android) or Apple Store (iOS).
 - For NB/PC, EZCastPro installer can be downloaded from Acer global website.
- **Step 3. Connect your device to the projector**
 - Before starting the app, open the WiFi settings on your NB/PC/ Smartphone/Tablet PC and find the projector name (Projector ID) which is AcerProjector_XXXXXXX and connect to it.
- **Step 4. Display**
 - Open the EZCastPro app and choose the device whose name is the same as the Projector ID. Then enter the password shown on the splash screen and enjoy the display experience.



Note 1: If you receive any security warnings, click OK to proceed with the installation procedure.

Note 2: The EZCastPro will create a desktop shortcut when the installation is completed.

System Requirements:

■ Windows OS

CPU	Dual Core Intel Core i 2.4Ghz
Memory	DDR 4GB and above
Graphic card	256MB VRAM or above
Operating System	Win7 / 8.0 / 8.1/ Win10 or above.



Note 1: ATOM and Celeron are not supported.

Note 2: OS with starter version is not supported.

Note 3: Extension mode may not be able to support some PC with Win 10 OS.

■ Mac OS

CPU	Dual Core Intel Core i 1.4 GHz or higher (PowerPC not supported)
Graphic card	Intel, nVIDIA or ATI graphic card with 64MB VRAM or above
Operating System	Mac OS X 10.11 or above. (Please make your OS is update-to-date)

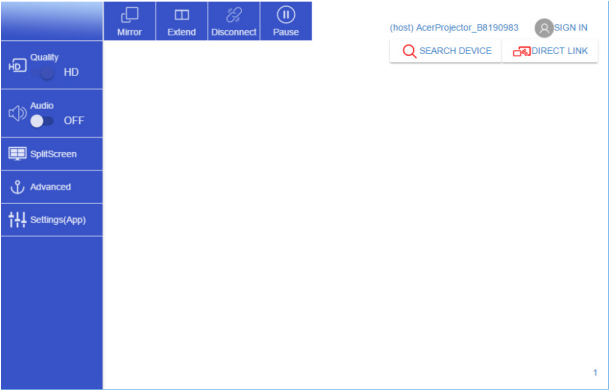
■ iOS

iOS	iOS 10 or above
Device	All iPhone™ models after iPhone 5 All iPad™ models after iPad mini 2
Storage	At least 40MB free space needed

■ Android





Phone/Pad	Android 5.0 or above with 1GB RAM
Resolution	WVGA ~1080p
CPU	Quad Core or above
Storage	At least 40MB free space needed

EZCastPro Management Interface (Windows/Mac)



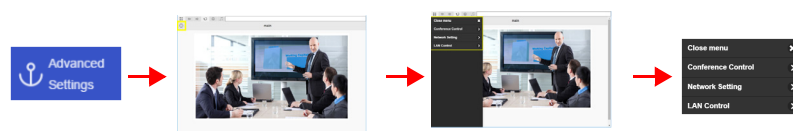
Function and Features

Function	Description	Icon
Display	<ul style="list-style-type: none">- Mirror and Extend are function on.- Disconnect is function off.- Pause is freeze screen.- Default by Mirror and Extend Off. <p><Note 1> Mirroring display is mainly for static document presentation and does not support iOS.</p> <p><Note 2> The resolution of video mirroring depends on system scaling and audio outputs from your device.</p>	
Image Quality	<ul style="list-style-type: none">- The default setting is High Image Quality.	

SplitScreen	<ul style="list-style-type: none"> - Allows max. 4 users to display on screen together, but only host can decide the position - By Full, L/R, and 4-Split mirror projection. - The default setting is Full mirror projection. - The Spilt Screen does not support audio and streaming. - With the permission from the host, the projection sequence is upper left, upper right, lower left and lower right. 	 SplitScreen
Advanced Settings	<ul style="list-style-type: none"> - One click on "Advanced Settings" jumps to the setting page including Conference Control, Network setting, and LAN Control. - Only host can use setting feature, and the "Advanced Settings" icon will be gray out in guest mode. 	 
Privacy	<ul style="list-style-type: none"> - "Privacy" will remember your device ID and the app will link to it directly next time. 	 Privacy

Advanced Settings

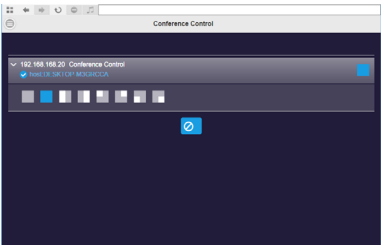
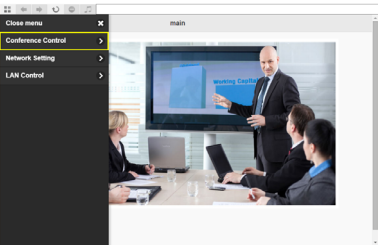
One click on "Advanced Settings" jumps to setting page including Conference Control, Network Setting, and LAN Control.



Conference Control

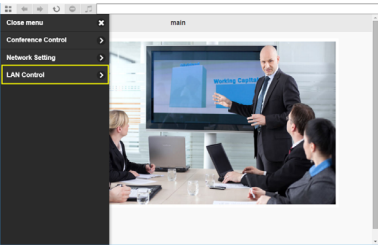
The host control ensures the right of projection for the main presenter. The user is divided into two levels. The highest privilege is assigned as Level 1 and the lowest one is assigned as Level 2.

Level 1	Host	For the first user using EZCastPro to make the connection, all guests are allowed for projection only with the permission from the host. The conference control can only be controlled by the host to give the permission and assign the position of projection to the guest.
Level 2	Guest	The user who is not the first one using EZCastPro may conduct the projection only with the permission from the host.



LAN Control

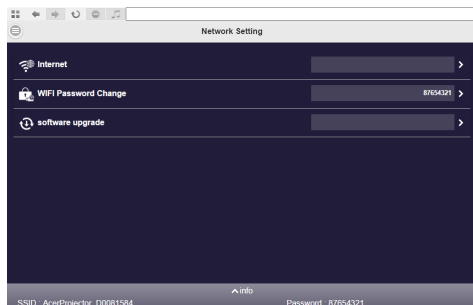
Press on the "LAN Control" item links to the Login in page of Acer Projector Gateway Webpage. A password is needed to login in before using. For more details, see "Acer Projector Gateway Webpage."



Note: For LAN control function, make sure your LAN cable is connected to the projector.

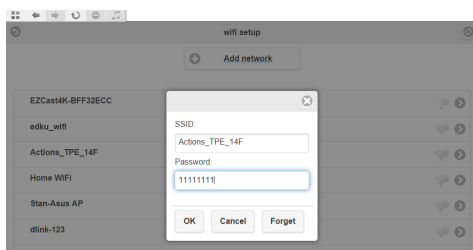
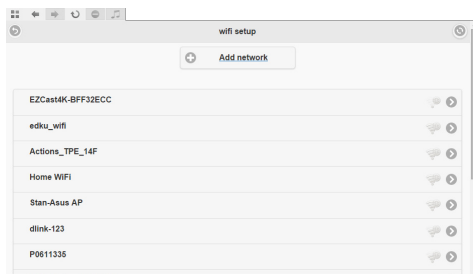
Network Setting

Network Setting includes WiFi, WiFi Password Change, and Software Upgrade.



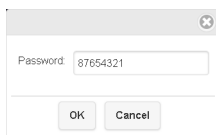
(1) WiFi

To set available network for your projector's access.



(2) WiFi Password Change

Press on the "WiFi password" item pops up a window showing the current password and enter the new password and press "Confirm" to change the password.



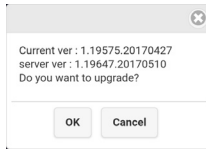


NOTE: It is required to re-connect to projector after changing the WiFi password.

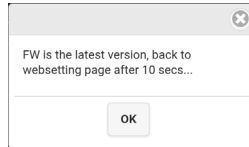
(3) Software Upgrade

Press on the "Software Upgrade" item pops up a message which will show the below three situations:

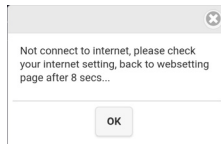
A. Found that there's a newer software version and requested an upgrade.



B. Found that current software is the latest version.

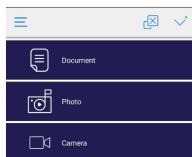


C. Found that the internet has not been connected yet.



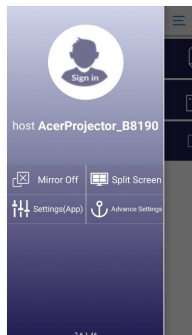
EZCastPro Management Interface (iOS/Android)

EZCastPro features functions such as Photo, Live cam, Office viewer, and Split Screen. Once executing this app, you can project the small screen from your device to a bigger one via projector.



(APP Shortcut)

(Before login)



(After login)

Function and Features

■ Mirroring

- Mirroring mobile screen.
- Required 3.5mm phone jack or speaker to line out the mobile content voice.
- Support Android OS v5.0 or above. Suggest CPU with Quad Core or above.



Note 1: Mirroring display is mainly for static document presentation and does not support iOS.

Note 2: Video mirroring may cause voice and image lag.

■ Photo

- In the Photo viewer, you can select photo and it will be displayed on projector.
- It is required to allow eDisplaPro to share your camera roll and enable the location service before using Photo function in iOS.

■ Live Camera

- Live camera is a real object camera which allows you to stream the image from mobile device's camera, and take a snap shot to edit.
- You can adjust image quality and switch from Front/Rear camera. You can enable Sketch and save the current image to album.

■ Document

- The document viewer supports Microsoft office and PDF documents.
- For APPLE devices, before you start to cast, remember to sync the document files to your iOS device through iTunes.
- Some documents may not be displayed as same as shown on PC.

■ Split Screen

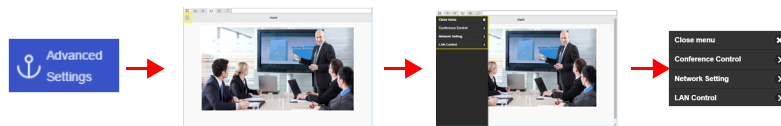
- LAN/WiFi source will allow max. 4 users to display on screen together, but only Host can decide the position he wants while other guest's screens will be placed automatically after the request is granted.
- The Split Screen does not support audio and streaming.
- With the permission from the host, the projection sequence is upper left, upper right, lower left and lower right.

■ Privacy

- "Privacy" will remember your device ID. You can save the current hardware to preferred device, and the app will find the preferred device and link to it directly next time.

■ Advanced Settings

One click on "Advanced Settings" jumps to setting page including Conference Control, Network Setting, and LAN Control.

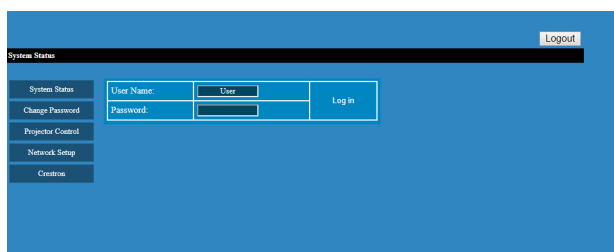


For more details on setting function, you could refer to the introduction of "Advanced Settings" part in EZCastPro Interface (Windows/Mac OS).

Acer Projector Webpage Gateway Management

How to Login in

Make sure you projector connects to your device through a LAN cable and set DHCP to off in Network. Open the internet browser and enter the Server IP address 192.168.100.10 to find below homepage of acer webpage management. A password is required to login in before using. Default password of User is "0000".



Note 1: System Status page is automatically selected after login.

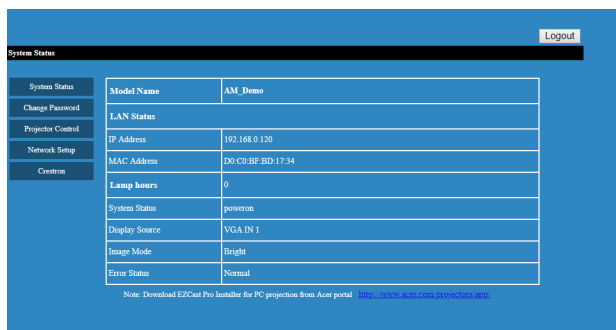
Note 2: If projector with Acer projection-Kit (optional), user could open WiFi setting on PC and connect Projector ID (showed by AcerProjector_XXXXXXX) first. Then, open the internet browser and enter by 192.168.168.1 to go for webpage interface.



System Status

After login, main function pages will appear, i.e. **System Status**, **Change Password**, **Projector Control**, **Network Setting**, and **Crestron**.

System Status page is automatically selected after login.



System Status	Model Name	AM_Demo
Change Password	LAN Status	
Projector Control	IP Address	192.168.0.120
Network Setup	MAC Address	D0:CE:BF:BD:17:34
Crestron	Lamp hours	0
	System Status	poweron
	Display Source	VGA IN 1
	Image Mode	Right
	Error Status	Normal

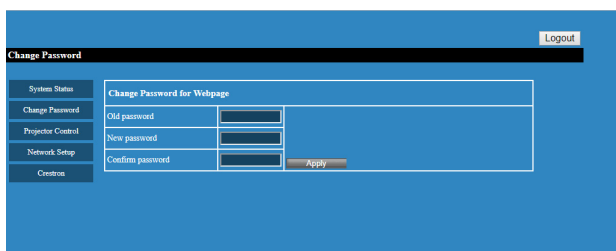
Note: Download EZCast Pro Installer for PC projection from Acer portal <http://www.acer.com/projectors/app/>



Download EZCast Pro Installer for PC projection from Acer portal <http://www.acer.com/projectors/app/>

Change Password

Enduser can change the login password as wish.



Change Password	Change Password for Webpage	
System Status	Old password	<input type="password"/>
Change Password	New password	<input type="password"/>
Projector Control	Confirm password	<input type="password"/>
Network Setup	<input type="button" value="Apply"/>	
Crestron		

Projector Control Panel

Enduser can control and adjust projector setting value via this page.

Network Setting

Enduser can set IP address as wish. After change network configurations, Network Setting on both webpage and projector will refresh automatically after press "Apply".

Crestron Setting (optional)

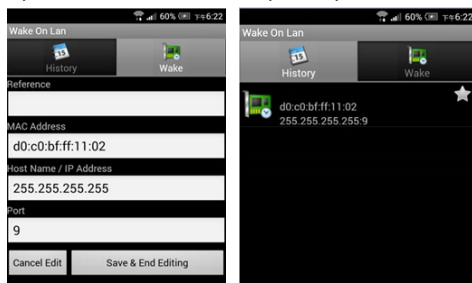
Enduser can change the settings for Crestron control system.

Wake-On-LAN (Standby)

User could power on the projector under power standby mode via Wake On LAN (WOL) application on the PC/Mobile device.

Instructions:

- Step 1: Download and install Wake On LAN (WOL) application. (For mobile device, search on Google store / Apple APP store. For NB/PC, search for a free tool on the internet. Keywords are "Wake On LAN" or "WOL download".)
- Step 2: Make sure Wake-On-LAN (Standby) item in the projector's OSD is set to On.
- Step 3: Execute the Wake On LAN (WOL) application. Input "Mac Address" show in the Network OSD page or Installation menu. IP address is "255.255.255.255" and enter port value "9". Save once done.
- Step 4: Tape the saved item and tap it to power on the projector.



Note 1: Make sure the power cord is plugged to your projector and power LED shows solid red in advance.

Note 2: Make sure the LAN cable is connected to the projector and the internet is active.

Note 3: If the IP address "255.255.255.255" does not work, try to input the first 3 sections of your router's IP address and the last section by 255 => "XXX.XXX.XXX.255"

For example, if your router IP address is "123.456.789.111", input IP address "123.456.789.255" in the app.

Mobile USB Display

User could connect Android mobile device to the projector's USB port via mobile USB cable to do mobile USB display.

Instructions:

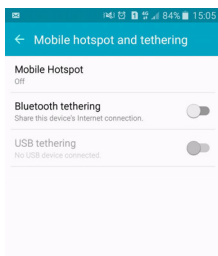
- Step 1. Select source "Mobile USB Display".



- Step 2. Download and install EZCastPro app on your mobile device.



- Step 3. Connect the mobile device to projector's USB A port via mobile USB cable.
- Step 4. Enable "USB Tethering" or USB network connection. (Location is normally by Setting > More > USB Tethering > Enable)



- Step 5. Open EZCastPro app that will auto into the device list. After choosing the device, EZCastPro will show the mirror message.



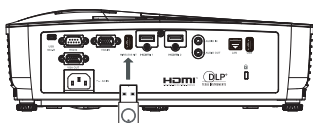
Note 1: Support Android OS v5.0 or above and suggest CPU with Quad Core or above.

Note 2: Required 3.5mm phone jack or speaker to line out the mobile content voice.

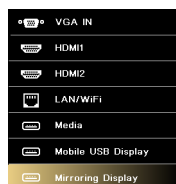
Note 3: The location of USB tethering varies depending on different Android mobiles.

Mirroring Display

Plug supported WiFi dongles into the WIRELESS KIT port of the projector. Press SOURCE on the projector or remote control to select source "Mirroring Display", and you can enjoy mirroring projection from your smartphone to the projector (Android and selected brand devices). Follow the onscreen instructions.



(optional)



NOTE 1: Make sure your mobile device is Miracast compatible.

NOTE 2: This function is only available for Windows 8.1 and Windows 10.

NOTE 3: Support Acer WirelessPrejection-Kit dongle.